



Better Together for Canadian Dairy

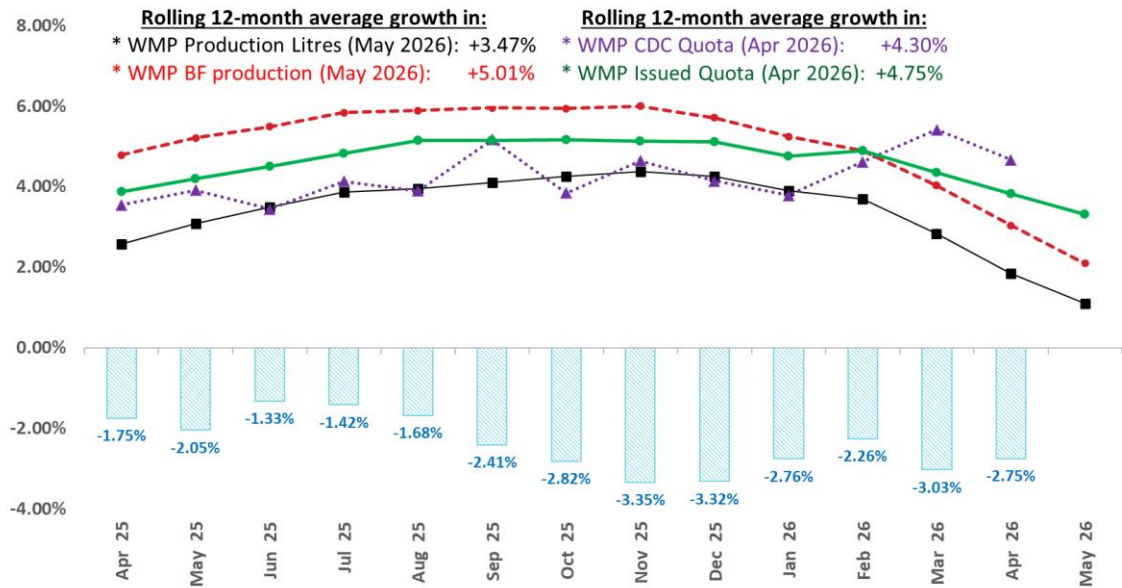
WMP Production and Quota Update May 2026

WMP Production Update

Daily average pre-pooling production in May was 6.786 million litres, an increase of 170,886 litres (+2.58%) from April's post-pooling average of 6.615 million litres. The average butterfat density in May was 4.3492 kg/hl, representing a 3.66% decrease from April's 4.5144 kg/hl.

On a year-over-year basis, production for the 12-month period ending May 2026 increased by 1.10% in litres and 2.09% in butterfat compared with the 12-month period ending May 2025. See the chart below for the most recent historical trend.

WMP Year over Year Growth Trend in Annual Production, Quota and CQP (%)



	Apr 2025	May 2025	Jun 2025	Jul 2025	Aug 2025	Sep 2025	Oct 2025	Nov 2025	Dec 2025	Jan 2026	Feb 2026	Mar 2026	Apr 2026	May 2026
WMP CQP (%)	-1.75%	-2.05%	-1.33%	-1.42%	-1.68%	-2.41%	-2.82%	-3.35%	-3.32%	-2.76%	-2.26%	-3.03%	-2.75%	
WMP YoY growth in Production L (%)	2.58%	3.08%	3.49%	3.86%	3.94%	4.09%	4.25%	4.38%	4.26%	3.90%	3.68%	2.83%	1.84%	1.10%
WMP YoY growth in Production BF (%)	4.79%	5.21%	5.49%	5.83%	5.89%	5.95%	5.94%	6.00%	5.71%	5.24%	4.88%	4.02%	3.04%	2.09%
WMP YoY growth in CDC Quota BF (%)	3.55%	3.91%	3.44%	4.13%	3.89%	5.16%	3.84%	4.64%	4.14%	3.78%	4.61%	5.41%	4.67%	
WMP YoY growth in Issued Quota BF (%)	3.87%	4.19%	4.50%	4.81%	5.15%	5.15%	5.15%	5.13%	5.12%	4.76%	4.89%	4.34%	3.82%	3.31%

Producer Quota Holdings and Credit Position

The WMP net credit position in May is very low at -0.24 days, indicating that available underproduction credits have nearly offset overproduction, leaving only 0.26 days of credits remaining. The table below summarizes credit positions by province.

May-2026	MB	SK	AB	BC	WMP
Producer Quota (Kg/day)	51,321	36,489	104,942	105,607	298,359
Net Credits (kg)	14,297	-9,418	-97,711	22,413	-70,419
Net Credits (days)	0.28	-0.26	-0.93	0.21	-0.24

WMP CDC Quota Update (April)

The WMP's rolling 12-month CDC quota decreased by 0.27% in April compared to March 2026. Monthly producer quota issuance for the WMP averaged 298,146kg/day in April, representing 97.85% of the previous 12-month average CDC allocation.

The WMP under-filled its monthly CDC quota allotment by 322,306 kg of butterfat (-3.73%) in April, compared with +3.27% during the same period last year.

The 12-month production-to-CDC quota fill rate for April was 98.68% for the WMP and 100.91% for the P5.

Cumulative Quota Positions (CQP) at the end of April 2026 were -2.75% for the WMP, +3.59% for the P5, and +1.25% for the P10. These results indicate that each pool is cumulatively under- or over-producing by their respective percentages.

April 2026 post-pooling comparisons						
Pool	Production Growth		Producer vs. CDC Quota Issuance Rate		CDC Quota Fill Rate	
	12m Litres	12m BF kg	12m vs. 12m	Monthly vs. 12m	12m vs. 12m	Monthly vs. 12m
WMP	1.84%	3.04%	97.64%	97.80%	98.68%	97.96%
P5	1.06%	2.40%	100.60%	101.30%	100.91%	101.36%
P10	1.29%	2.59%	99.83%	100.39%	100.33%	100.47%

Quota and Milk Production Summary (BF kg)					
Month	Apr 2026	May 2026	Jun 2026	Jul 2026	Aug 2026
Status	Official	Projected	Projected	Projected	Projected
Western Milk Pool					
Butterfat Production (kg/day)	298,621	294,411	292,056	287,490	289,095
Pool Quota (kg/day)	287,877	297,829	313,088	310,566	306,363
Cumulative Position (%)*	-2.75%	-2.86%	-3.39%	-4.02%	-4.50%
Net Penalty (kg)	0	0	0	0	0
*The P10 pool's limits on production are +1.25% and -2.00% of the P10 rolling 12-month quota.					

Incentive Days Utilization Update

Month	Days	Incentive Credit Issuance (kg)					Incentive Credit Utilization Rate (%)				
		MB	SK	AB	BC	WMP	MB	SK	AB	BC	WMP
Jun-25	2	98,894	72,965	207,616	201,553	581,028	52.3%	52.2%	46.0%	42.4%	46.6%
Jul-25	2	108,468	72,974	207,627	201,338	590,407	43.7%	56.2%	42.4%	38.1%	42.9%
Aug-25	2	104,344	72,973	207,526	201,463	586,305	49.1%	55.7%	37.1%	35.1%	40.9%
Sep-25	1	49,484	36,482	103,829	100,778	290,574	61.7%	61.6%	44.8%	44.6%	49.7%
Oct-25	1	59,590	36,482	103,873	100,921	300,865	69.2%	66.2%	52.1%	56.1%	58.6%
Nov-25	1	42,271	36,482	103,885	100,919	283,557	64.8%	71.3%	52.4%	60.5%	59.5%