



Better Together for Canadian Dairy

WMP Production and Quota Update February 2026

WMP Pre-Pooling Production Update

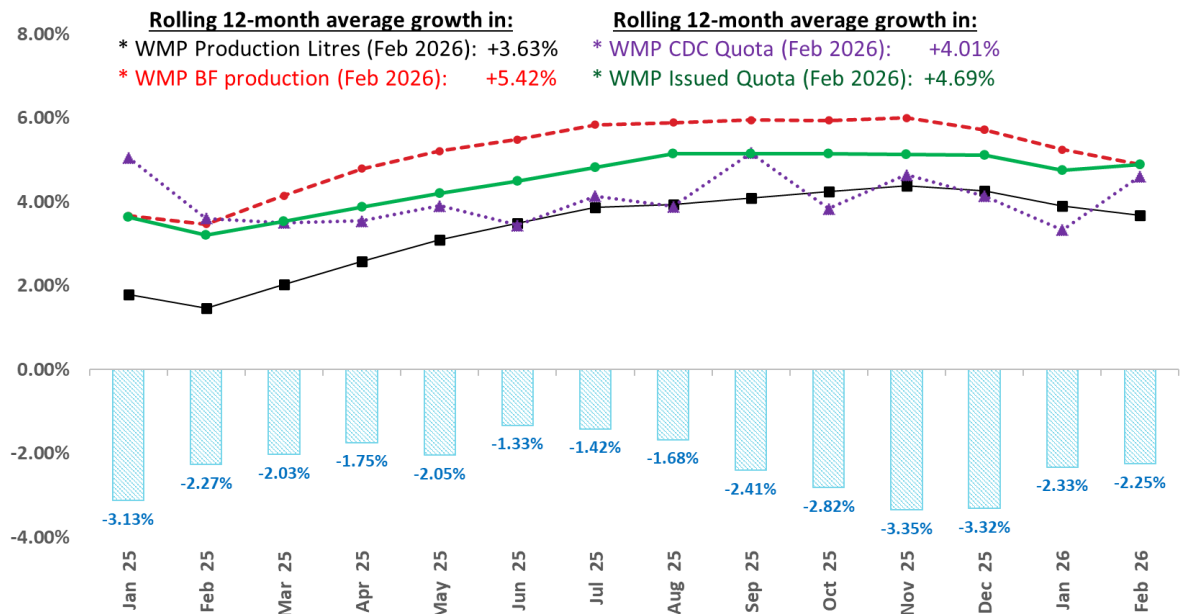
Daily average production in February was 6.556 million litres, a decrease of 77,852 litres (-1.17%) from January's post-pooling average of 6.633 million litres.

The average butterfat density in February was 4.5991 kg/hl, representing a 0.58% increase from January's 4.5727 kg/hl.

On a year-over-year basis, production for the 12-month period ending February 2026 increased by 3.68% in litres and 4.88% in butterfat compared with the 12-month period ending February 2025.

See the chart below for the most recent historical trend.

WMP Year over Year Growth Trend in Annual Production, Quota and CQP (%)



	Jan 2025	Feb 2025	Mar 2025	Apr 2025	May 2025	Jun 2025	Jul 2025	Aug 2025	Sep 2025	Oct 2025	Nov 2025	Dec 2025	Jan 2026	Feb 2026
WMP CQP (%)	-3.13%	-2.27%	-2.03%	-1.75%	-2.05%	-1.33%	-1.42%	-1.68%	-2.41%	-2.82%	-3.35%	-3.32%	-2.33%	-2.25%
WMP YoY growth in Production L (%)	1.79%	1.45%	2.02%	2.58%	3.08%	3.49%	3.86%	3.94%	4.09%	4.25%	4.38%	4.26%	3.90%	3.68%
WMP YoY growth in Production BF (%)	3.66%	3.47%	4.15%	4.79%	5.21%	5.49%	5.83%	5.89%	5.95%	5.94%	6.00%	5.71%	5.24%	4.88%
WMP YoY growth in CDC Quota BF (%)	5.05%	3.60%	3.50%	3.55%	3.91%	3.44%	4.13%	3.89%	5.16%	3.84%	4.64%	4.14%	3.33%	4.61%
WMP YoY growth in Issued Quota BF (%)	3.64%	3.20%	3.54%	3.87%	4.19%	4.50%	4.81%	5.15%	5.15%	5.15%	5.13%	5.12%	4.76%	4.89%

WMP Quota Update

The WMP's rolling 12-month CDC quota increased by 0.79% in February compared to January 2026. Monthly producer quota issuance for the WMP averaged 297,820 kg/day in February, representing 98.29% of the previous 12-month average CDC allocation.

The WMP under-filled its monthly CDC quota allotment by 75,291 kg of butterfat (-0.88%), compared with +12.04% during the same period last year.

The 12-month production-to-CDC quota fill rate for February was 99.68% for the WMP and 101.00% for the P5.

Cumulative Quota Positions (CQP) at the end of February 2026 were -2.25% for the WMP, +3.38% for the P5, and +1.24% for the P10. These results indicate that each pool is cumulatively under- or over-producing by their respective percentages.

February 2026 post-pooling comparisons						
Pool	Production Growth		Producer vs. CDC Quota Issuance Rate		CDC Quota Fill Rate	
	12m Litres	12m BF kg	12m vs. 12m	Monthly vs. 12m	12m vs. 12m	Monthly vs. 12m
WMP	3.68%	4.88%	98.23%	98.30%	99.68%	99.51%
P5	0.93%	2.32%	100.70%	101.57%	101.00%	103.09%
P10	1.65%	2.99%	100.06%	100.72%	100.66%	102.16%

Quota and Milk Production Summary (BF kg)					
Month	Feb 2026	Mar 2026	Apr 2026	May 2026	Jun 2026
Status	Official	Projected	Projected	Projected	Projected
Western Milk Pool					
Butterfat Production (kg/day)	301,492	304,555	297,889	294,411	292,056
Pool Quota (kg/day)	304,181	288,809	302,500	299,782	314,778
Cumulative Position (%)*	-2.25%	-1.82%	-1.94%	-2.10%	-2.69%
Net Penalty (kg)	0	0	0	0	0
*The P10 pool's limits on production are +1.25% and -2.00% of the P10 rolling 12-month quota.					

Incentive Days Utilization Update

Month	Days	Incentive Credit Issuance (kg)					Incentive Credit Utilization Rate (%)				
		MB	SK	AB	BC	WMP	MB	SK	AB	BC	WMP
Oct-24	2	95,349	70,196	198,313	193,446	557,304	48.3%	57.8%	49.8%	46.8%	49.5%
Nov-24	2	95,993	70,196	198,612	193,521	558,322	55.8%	59.0%	55.5%	47.4%	53.2%
Dec-24	2	97,252	71,541	198,698	193,599	561,090	64.5%	61.0%	63.4%	59.1%	61.8%
Jan-25	2	98,532	71,542	202,719	197,713	570,506	60.5%	61.0%	61.5%	61.0%	61.1%
Feb-25	2	97,921	71,549	202,842	197,490	569,803	68.1%	60.7%	63.9%	65.5%	64.8%
Mar-25	2	109,401	72,960	207,419	201,926	591,706	57.3%	50.8%	55.3%	56.9%	55.7%
Apr-25	2	109,193	72,958	207,686	202,108	591,944	60.5%	54.5%	55.1%	52.8%	55.2%
May-25	2	98,172	72,976	207,633	201,668	580,449	55.5%	49.7%	48.5%	49.8%	50.3%
Jun-25	2	98,894	72,965	207,616	201,553	581,028	52.3%	52.2%	46.0%	42.4%	46.6%
Jul-25	2	108,468	72,974	207,627	201,338	590,407	43.7%	56.2%	42.4%	38.1%	42.9%
Aug-25	2	104,344	72,973	207,526	201,463	586,305	49.1%	55.7%	37.1%	35.1%	40.9%
Sep-25	1	49,484	36,482	103,829	100,778	290,574	61.7%	61.6%	44.8%	44.6%	49.7%
Oct-25	1	59,590	36,482	103,873	100,921	300,865	69.2%	66.2%	52.1%	56.1%	58.6%
Nov-25	1	42,271	36,482	103,885	100,919	283,557	64.8%	71.3%	52.4%	60.5%	59.5%