



Better Together for Canadian Dairy

WMP Production and Quota Update December 2025

WMP Pre-Pooling Production Update

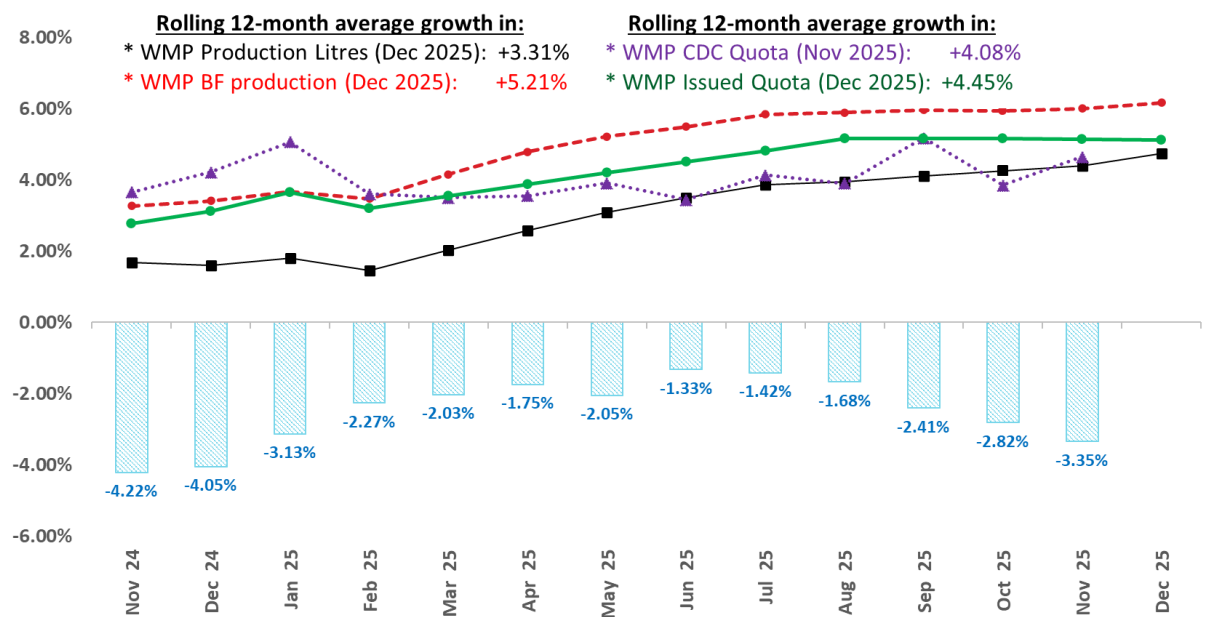
Daily average production in December was 6.943 million litres, an increase of 275,139 litres (4.13%) from November's post-pooling average of 6.668 million litres.

The average butterfat density in December was 4.5632 kg/hl, representing a -0.51% decrease from November's 4.5867 kg/hl.

On a year-over-year basis, production for the 12-month period ending December 2025 increased by 4.73% in litres and 6.16% in butterfat compared with the 12-month period ending December 2024.

See the chart below for the most recent historical trend.

WMP Year over Year Growth Trend in Annual Production, Quota and CQP (%)



	Nov 2024	Dec 2024	Jan 2025	Feb 2025	Mar 2025	Apr 2025	May 2025	Jun 2025	Jul 2025	Aug 2025	Sep 2025	Oct 2025	Nov 2025	Dec 2025
WMP CQP (%)	-4.22%	-4.05%	-3.13%	-2.27%	-2.03%	-1.75%	-2.05%	-1.33%	-1.42%	-1.68%	-2.41%	-2.82%	-3.35%	
WMP YoY growth in Production L (%)	1.68%	1.60%	1.79%	1.45%	2.02%	2.58%	3.08%	3.49%	3.86%	3.94%	4.09%	4.25%	4.38%	4.73%
WMP YoY growth in Production BF (%)	3.26%	3.41%	3.66%	3.47%	4.15%	4.79%	5.21%	5.49%	5.83%	5.89%	5.95%	5.94%	6.00%	6.16%
WMP YoY growth in CDC Quota BF (%)	3.65%	4.21%	5.05%	3.60%	3.50%	3.55%	3.91%	3.44%	4.13%	3.89%	5.16%	3.84%	4.64%	
WMP YoY growth in Issued Quota BF (%)	2.76%	3.11%	3.64%	3.20%	3.54%	3.87%	4.19%	4.50%	4.81%	5.15%	5.15%	5.15%	5.13%	5.12%

WMP Quota Update

The WMP's rolling 12-month CDC quota increased by 0.71% in November compared to October 2025. Monthly producer quota issuance for the WMP averaged 296,597 kg/day in December, representing 99.24% of the previous 12-month average CDC allocation.

The WMP under-filled its monthly CDC quota allotment by 608,346 kg of butterfat (-6.22%), compared with -2.27% during the same period last year.

The 12-month production-to-CDC quota fill rate for November was 100.44% for the WMP and 101.27% for the P5.

Cumulative Quota Positions (CQP) at the end of November 2025 were -3.35% for the WMP, +2.23% for the P5, and +0.13% for the P10. These results indicate that each pool is cumulatively under- or over-producing by their respective percentages.

November 2025 post-pooling comparisons						
	Production Growth		Producer vs. CDC Quota Issuance Rate		CDC Quota Fill Rate	
Pool	12m Litres	12m BF kg	12m vs. 12m	Monthly vs. 12m	12m vs. 12m	Monthly vs. 12m
WMP	4.38%	6.00%	98.30%	98.98%	100.44%	101.72%
P5	1.11%	2.53%	101.06%	101.10%	101.27%	104.71%
P10	1.96%	3.43%	100.35%	100.55%	101.05%	103.93%

Quota and Milk Production Summary (BF kg)					
Month	Nov 2025	Dec 2025	Jan 2026	Feb 2026	Mar 2026
Status	Official	Pre-Pooling	Projected	Projected	Projected
Western Milk Pool					
Butterfat Production (kg/day)	305,852	316,837	320,491	321,504	318,738
Pool Quota (kg/day)	326,130	288,135	282,983	288,729	288,809
Cumulative Position (%) *	-3.35%	-2.54%	-1.48%	-0.64%	0.20%
Net Penalty (kg)	0	0	0	0	0
*The P10 pool's limits on production are +1.25% and -2.00% of the P10 rolling 12-month quota.					

Incentive Days Utilization Update

Incentive Credit Issuance (kg)							Incentive Credit Utilization Rate (%)				
Month	Days	MB	SK	AB	BC	WMP	MB	SK	AB	BC	WMP
Oct-24	2	95,349	70,196	198,313	193,446	557,304	48.3%	57.8%	49.8%	46.8%	49.5%
Nov-24	2	95,993	70,196	198,612	193,521	558,322	55.8%	59.0%	55.5%	47.4%	53.2%
Dec-24	2	97,252	71,541	198,698	193,599	561,090	64.5%	61.0%	63.4%	59.1%	61.8%
Jan-25	2	98,532	71,542	202,719	197,713	570,506	60.5%	61.0%	61.5%	61.0%	61.1%
Feb-25	2	97,921	71,549	202,842	197,490	569,803	68.1%	60.7%	63.9%	65.5%	64.8%
Mar-25	2	109,401	72,960	207,419	201,926	591,706	57.3%	50.8%	55.3%	56.9%	55.7%
Apr-25	2	109,193	72,958	207,686	202,108	591,944	60.5%	54.5%	55.1%	52.8%	55.2%
May-25	2	98,172	72,976	207,633	201,668	580,449	55.5%	49.7%	48.5%	49.8%	50.3%
Jun-25	2	98,894	72,965	207,616	201,553	581,028	52.3%	52.2%	46.0%	42.4%	46.6%
Jul-25	2	108,468	72,974	207,627	201,338	590,407	43.7%	56.2%	42.4%	38.1%	42.9%
Aug-25	2	104,344	72,973	207,526	201,463	586,305	49.1%	55.7%	37.1%	35.1%	40.9%
Sep-25	1	49,484	36,482	103,829	100,778	290,574	61.7%	61.6%	44.8%	44.6%	49.7%
Oct-25	1	59,590	36,482	103,873	100,921	300,865	69.2%	66.2%	52.1%	56.1%	58.6%
Nov-25	1	42,271	36,482	103,885	100,919	283,557	64.8%	71.3%	52.4%	60.5%	59.5%