



Strategic partner in Canada's dairy industry

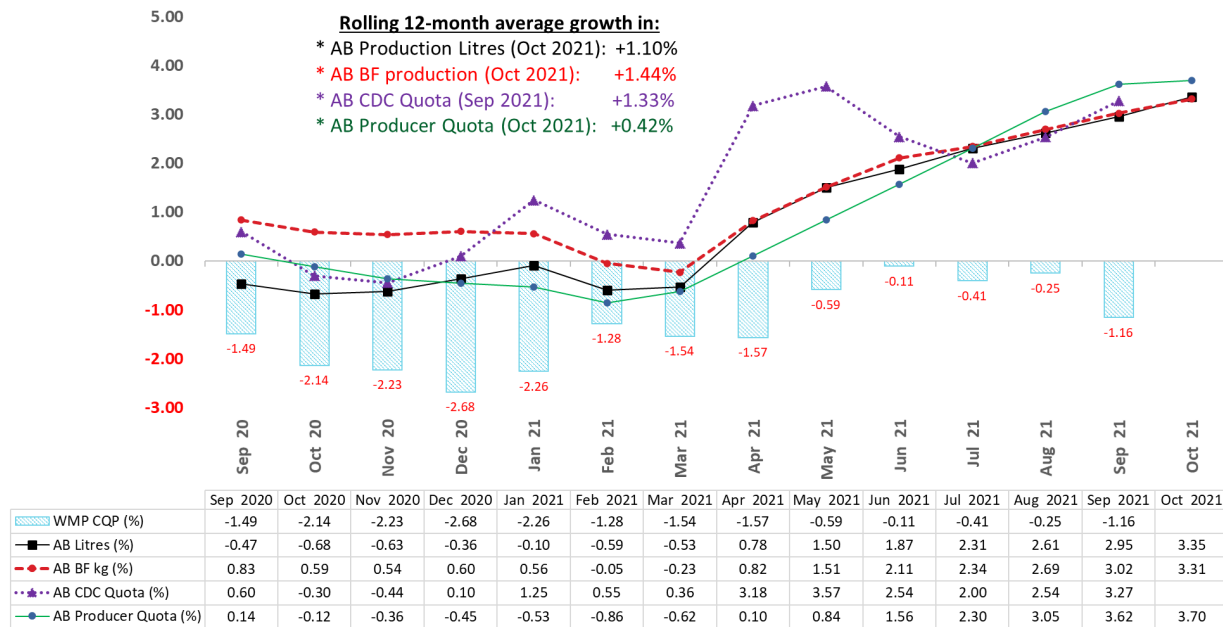
Alberta Production and Quota Update November 2021

Production Update

Daily average production in October was 2.3 million litres (pre-pooling), an increase of 46,573 litres (or +3.72 per cent) over September's post-pooling production of 2.22 million litres. The average butterfat density in October was 4.29 kilograms per hectoliter, a 1.79 per cent increase from September 2021.

When comparing the October pre-pooling production data on a year-over-year basis, it suggests a 3.35 per cent growth in volume in the 12-month period ending October 2021 over the 12-month period ending October 2020; and a 3.31 per cent growth in butterfat production for the same period. See the chart below for the most recent historical trend while noting that October 2021 is pre-pooling data.

Year over Year Growth Trend in Annual Production and Quota vs. CQP (%)



Quota Update

The WMP's rolling 12-month quota increased by 3.27 per cent in September over August. Alberta's daily producer quota issuance in September 2021 was 96,112 kg/day, 97.98 per cent relative to the past 12-month average CDC quota allocation.

Pool's Quota Utilization

Cumulative Quota Positions (CQP) at the end of September 2021 for the WMP, P5 and P10 were -1.16, -1.13 and -1.40 per cent respectively. This means that the respective pools on a cumulative basis are all under-producing by their respective percentages as indicated.

The WMP under-filled its monthly CDC quota allotment by 926,646 kilograms of butterfat in September 2021 or -10.30 per cent compared to -6.09 per cent for the same period last year.

Quota and Milk Production Summary (BF kg)					
Month	Sep 2021	Oct 2021	Nov 2021	Dec 2021	Jan 2022
Status	Official	Pre-Pooling	Projected	Projected	Projected
Alberta					
Butterfat Production (kg/day)	93,764	97,446	98,226	99,516	100,380
Provincial Quota (kg/day)	105,545	102,698	101,929	108,664	95,473
Producer Quota (kg/day)	96,112	96,105	96,105	96,105	96,105
Producer Quota + Incentive Credits (kg/day)	96,112	96,105	96,105	96,105	96,105
Cumulative Position (%)					
Producer Position (Days)	-2.95	-2.59	-2.02	-1.02	0.25
Provincial Position (Days)	-14.78	-16.77	-17.99	-19.49	-20.58
Penalty (kg)	0	0	0	0	0
Western Milk Pool					
Butterfat Production (kg/day)	271,215	279,898	283,082	286,686	289,105
Pool Quota (kg/day)	299,888	291,798	289,613	308,749	271,269
Cumulative Position (%)*	-1.16%	-1.53%	-1.72%	-2.39%	-1.85%
Penalty (kg)	0	0	0	0	0
*The P10 pool's limits on production are +1.25% and -2.00% of the P10 rolling 12-month quota.					

